

# \$260,500 - 1325 Madison Street, Black Earth

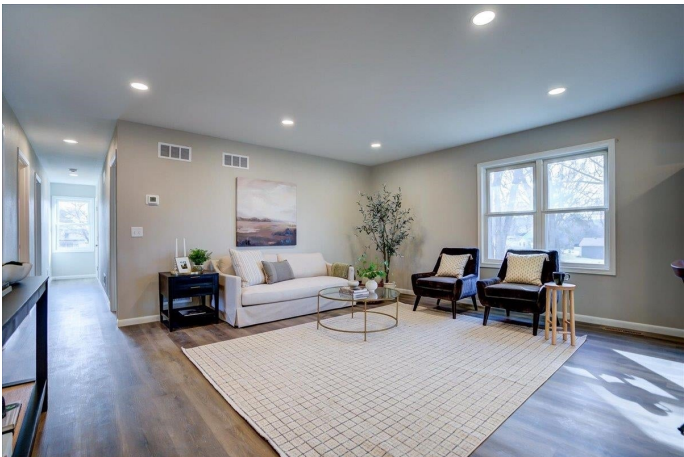
MLS® #1971295

## \$260,500

3 Bedroom, 1.50 Bathroom, 1,280 sqft  
Condo

N/A, Black Earth, WI

Venture within to experience the contemporary essence of this unit! Meticulously renovated from the studs up, this condominium features expansive rooms, flowing open spaces, and cutting-edge amenities. The ascent from the attached single-car garage enhances its modern allure, ensuring that convenience remains uncompromised in this condominium lifestyle. Discover the exceptional qualities of this unit today!



Listing Courtesy of Real Broker Llc

Built in 1935

## Essential Information

Status	Sold
Detailed Status	Sold
Days on Market	4
MLS® #	1971295
Price	\$260,500
Bedrooms	3
Bathrooms	1.50
Full Baths	1
Half Baths	1
Square Footage	1,280
Year Built	1935
Type	Condo
Style	Townhouse
Year Assesed	2023
Tax Year	2023

Exterior	Vinyl
----------	-------

### Community Information

Address	1325 Madison Street
MLS® Area	BLACK EARTH - V
Subdivision	N/A
Project Name	Blue Mounds Farm
City	Black Earth
County	Dane
State	WI
Zip Code	53515
Condo Rental Allowed	N

### Amenities

Parking	1 car Garage
Is Waterfront	No
Golf Course	No

### School Information

District	Wisconsin Heights
Elementary	Call School District
Middle	Call School District
High	Wisconsin Heights

### Room Dimensions

Living Room	17X16
Kitchen	12X13
Master Bedroom	16X14
Second Bedroom	11X11
Third Bedroom	11X11

### Property Overview

Total Units	1
-------------	---

### Additional Information

Zoning	Res
Estimated Finished Above Grade Sqft	1,280
Total Finished SqFt	1,280
Units in Association	2

Short Sale	No
REO / Bank Owned	No