

\$250,000 - 2823 Cimarron Trail, Madison

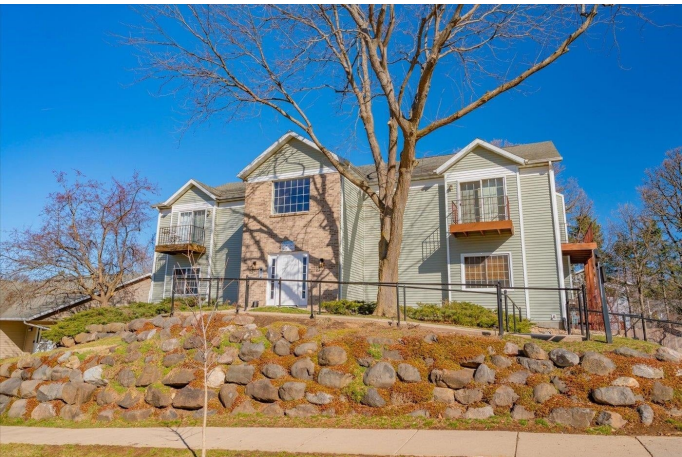
MLS® #1971271

\$250,000

2 Bedroom, 2.00 Bathroom, 1,250 sqft
Condo

N/A, Madison, WI

Showings start March 8th on this lovingly maintained condo with a fabulous split bedroom layout. The spacious primary suite is light filled and connected to your private bath with separate makeup vanity. Guest bedroom has walk-in closet leading to 2nd full bath. The kitchen provides plenty of storage along with newer appliances and a breakfast bar that seats four comfortably. The living room invites you in with its cozy gas fireplace and leads to your private deck. With wonderful neighbors in this 4 unit building and a small association in close proximity to dining, shopping, parks and more, this is a rare find! There are no steps to the unit, however there is a full flight of steps down to the tandem 2 car garage & a huge storage room.



Listing Courtesy of Stark Company, Realtors

Built in 1994

Essential Information

Status	Sold
Detailed Status	Sold
Days on Market	4
MLS® #	1971271
Price	\$250,000
Bedrooms	2
Bathrooms	2.00
Full Baths	2
Square Footage	1,250

Year Built	1994
Type	Condo
Style	Garden
Assessed Value	\$205,000
Year Assesed	2023
Net Taxes	\$3,331
Tax Year	2023
Exterior	Stone, Vinyl, Brick/Stone

Community Information

Address	2823 Cimarron Trail
MLS® Area	MADISON - C W09
Subdivision	N/A
Project Name	New West Condominiums
City	Madison
County	Dane
State	WI
Zip Code	53719
Condo Fee	\$345
Condo Fees Include	Trash removal, Snow removal, Common area maintenance, Common area insurance
Pet Policy	Pets-Number Limit, Cats OK, Dogs OK
Condo Rental Allowed	N

Interior

Interior Features	At Least 1 tub, Walk-in closet(s), Cathedral/vaulted ceiling, Washer, Dryer, Cable/Satellite Available
Fireplace	Yes
Fireplaces	Gas burning

Exterior

Exterior Features	Deck/Balcony
-------------------	--------------

Amenities

Amenities	Common Green Space, Close to busline
Parking	2 car Garage, Attached, Tandem, Opener inc
Is Waterfront	No
Golf Course	No

School Information

District	Madison
Elementary	Huegel
Middle	Toki
High	Memorial

Room Dimensions

Living Room	18x14
Kitchen	14x8
Master Bedroom	16x12
Second Bedroom	12x12

Property Overview

Total Units	4
-------------	---

Additional Information

Zoning	SR-V1
Estimated Finished Above Grade Sqft	1,250
Total Finished SqFt	1,250
Units in Association	12
Barrier Free	Open floor plan, Ramped or level entrance, First floor bedroom, floor full bath, Grab bars in
Terms	Pets-Number Limit, Cats OK, Dogs OK
Terms (Misc.)	Pets-Number Limit, Cats OK, Dogs OK
Short Sale	No
REO / Bank Owned	No