

\$263,000 - 2855 Holborn Circle, Madison

MLS® #1971108

\$263,000

2 Bedroom, 1.50 Bathroom, 1,113 sqft
Condo

N/A, Madison, WI

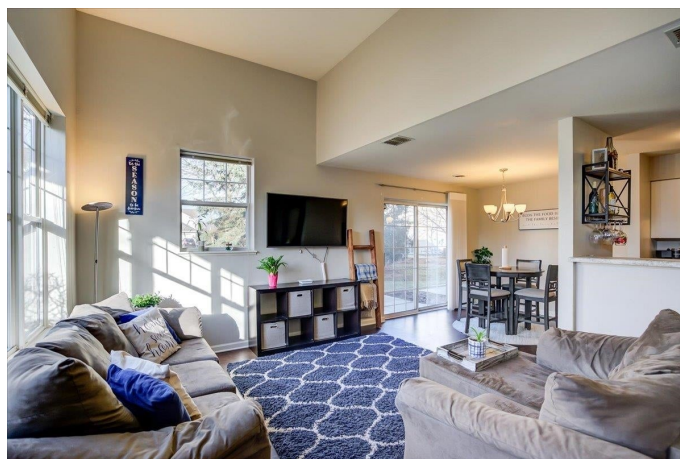
Welcome to your new home in Madison's vibrant east side! This charming townhouse condo offers convenience, comfort, and modern living. Moments from shopping, dining, and entertainment, with easy access to major roads. Enjoy the outdoors with a nearby park. Inside, find 2 spacious bedrooms, 1.5 baths, and second-floor laundry. The primary suite features an ensuite with a double vanity. Entertain on your patio and park with ease in the attached garage. Don't miss out, schedule a showing today and experience the best of Madison living!

Listing Courtesy of Realty Executives Cooper Spransy

Built in 1994

Essential Information

Status	Sold
Detailed Status	Sold
Days on Market	5
MLS® #	1971108
Price	\$263,000
Bedrooms	2
Bathrooms	1.50
Full Baths	1
Half Baths	1
Square Footage	1,113
Year Built	1994
Type	Condo



Style	Townhouse
Assessed Value	\$219,800
Year Assesed	2023
Net Taxes	\$3,661
Tax Year	2022
Exterior	Vinyl

Community Information

Address	2855 Holborn Circle
MLS® Area	MADISON - C E08
Subdivision	N/A
Project Name	Holborn Village
City	Madison
County	Dane
State	WI
Zip Code	53718
Condo Fee	\$200
Condo Fees Include	Lawn maintenance, Parking, Trash removal, Snow removal, Common area maintenance, Common area insurance, Reserve fund
Pet Policy	Pets-Number Limit, Dog Size Limit, Cats OK, Dogs OK
Condo Rental Allowed	Y

Interior

Interior Features	At Least 1 tub, Tankless Water Heater, Wood or sim. wood floors, Walk-in closet(s), Great room, Cathedral/vaulted ceiling, Washer, Dryer, Water softener included, Cable/Satellite Available
-------------------	--

Exterior

Exterior Features	Unit Adj to Park/PubLand, Private Entry, Patio
-------------------	--

Amenities

Amenities	Common Green Space, Close to busline
Parking	1 car Garage, Attached
Is Waterfront	No
Golf Course	No

School Information

District	Sun Prairie
Elementary	Call School District
Middle	Call School District

High Call School District

Room Dimensions

Living Room	15x12
Kitchen	12x9
Master Bedroom	17x11
Second Bedroom	15x13

Property Overview

Total Units	4
-------------	---

Additional Information

Zoning	Res
Estimated Finished Above Grade	1,113sqft
Total Finished SqFt	1,113
Units in Association	96
Barrier Free	Level drive, Level lot, Width of hallways 36in+, Door openings 29in+
Terms	Rental Allowed, Pets-Number Limit, Dog Size Limit, Cats OK, Dogs OK
Terms (Misc.)	Rental Allowed, Pets-Number Limit, Dog Size Limit, Cats OK, Dogs OK
Short Sale	No
REO / Bank Owned	No