

\$450,000 - Thistledown Drive, Lodi

MLS® #1963080

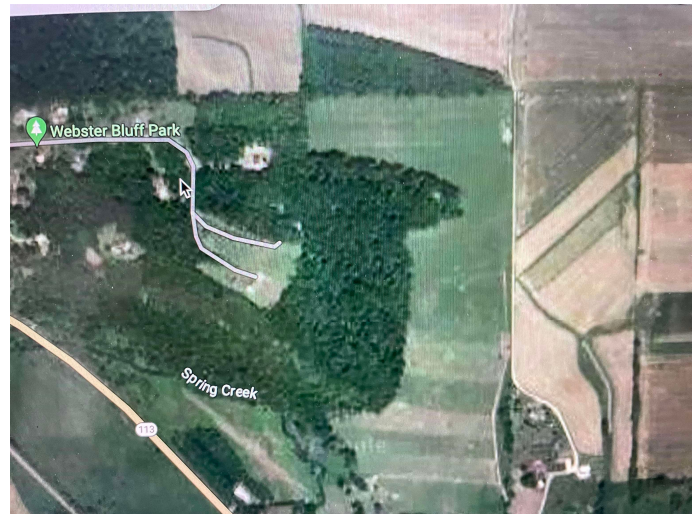
\$450,000

Bedroom, Bathroom,
Lots & Acreage on 35 Acres

N/A, Lodi, WI

35 ACRES, Top of the hill. OH so many views. 27 wooded acres, 8 pasture or tillable?
This acreage has a buildable sight.

Listing Courtesy of Wisconsin Realty Group



Essential Information

Status	Sold
Detailed Status	Sold
Days on Market	59
MLS® #	1963080
Price	\$450,000
Acres	35.01
Price Per Acre	\$12,853
Type	Lots & Acreage
Assessed Value	\$5,800
Year Assesed	2023
Net Taxes	\$75
Tax Year	2022
Utilities	Other
Zoning	AG
Type	Rural
Description	Rural - in subdivision
Topography	Sloping

Community Information

Address	Thistledown Drive
MLS® Area	LODI - T
Subdivision	N/A

City	Lodi
County	Columbia
State	WI
Zip Code	53555

Amenities

Is Waterfront	No
Golf Course	No

School Information

District	Lodi
Elementary	Lodi
Middle	Lodi
High	Lodi

Parcel Information

Specific Builder Required	No
Utilities Available to Lot	Other
Water System	Well required
Waste System	Non municipal/Private req
Road	Concrete, Easement
Improvements	Driveway

Additional Information

Zoning	AG
Short Sale	No
REO / Bank Owned	No