

\$179,900 - Lot 64 Kettle Creek North, Verona

MLS® #1962555

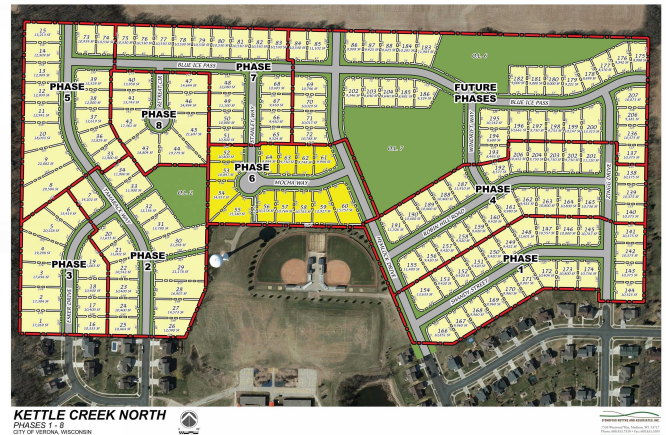
\$179,900

Bedroom, Bathroom,
Lots & Acreage on 0 Acres

Kettle Creek North, Verona, WI

Phase 6 lots available October 2023! Kettle Creek North includes plenty of green space, parks and bike paths. The new subdivision is adjacent to Country View Elementary, walking distance to many nearby Verona Schools and just minutes to Hwy 18/151 and County Hwy M.

Listing Courtesy of Stark Company, Realtors



Essential Information

Status	Sold
Detailed Status	Sold
Days on Market	42
MLS® #	1962555
Price	\$179,900
Acres	0.23
Price Per Acre	\$0
Type	Lots & Acreage
Assessed Value	\$31,500
Year Assesed	2022
Net Taxes	\$572
Tax Year	2022
Utilities	Natural gas, Electricity, Telephone, Cable, All underground
Zoning	Res
Type	City
Description	Rural - in subdivision
Topography	Rolling

Community Information

Address	Lot 64 Kettle Creek North
MLS® Area	VERONA - C
Subdivision	Kettle Creek North
City	Verona
County	Dane
State	WI
Zip Code	53593

Amenities

Is Waterfront	No
Golf Course	No

School Information

District	Verona
Elementary	Country View
Middle	Badger Ridge
High	Verona

Parcel Information

Specific Builder Required	No
Utilities Available to Lot	Natural gas, Electricity, Telephone, Cable, All underground
Water System	Municipal water available
Waste System	Municipal sewer available
Road	Concrete
Improvements	Curb/gutter, Sidewalk

Additional Information

Zoning	Res
Short Sale	No
REO / Bank Owned	No