

# \$184,900 - 737 Mocha Way, Verona

MLS® #1962546

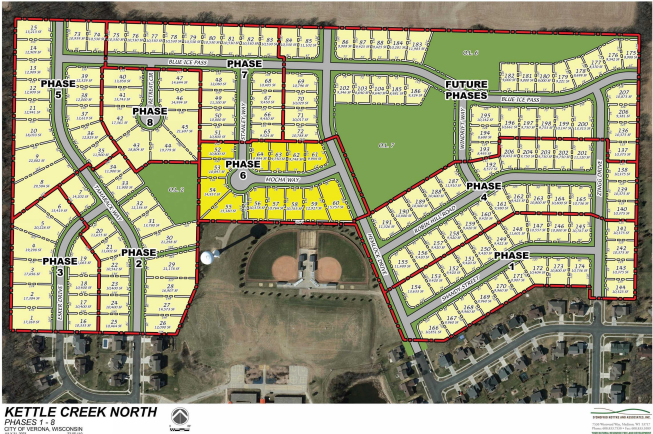
**\$184,900**

Bedroom, Bathroom,  
Lots & Acreage on 0 Acres

Kettle Creek North, Verona, WI

Phase 6 lots available October 2023! Kettle Creek North includes plenty of green space, parks and bike paths. The new subdivision is adjacent to Country View Elementary, walking distance to many nearby Verona Schools and just minutes to Hwy 18/151 and County Hwy M.

Listing Courtesy of Stark Company, Realtors



## Essential Information

Status	Sold
Detailed Status	Sold
Days on Market	8
MLS® #	1962546
Price	\$184,900
Acres	0.24
Price Per Acre	\$0
Type	Lots & Acreage
Assessed Value	\$32,100
Year Assesed	2022
Net Taxes	\$583
Tax Year	2022
Utilities	Electricity, Telephone, Cable, Natural gas, All underground
Zoning	Res
Type	City
Description	Rural - in subdivision
Topography	Sloping

## Community Information

Address	737 Mocha Way
MLS® Area	VERONA - C
Subdivision	Kettle Creek North
City	Verona
County	Dane
State	WI
Zip Code	53593

### **Amenities**

Is Waterfront	No
Golf Course	No

### **School Information**

District	Verona
Elementary	Country View
Middle	Badger Ridge
High	Verona

### **Parcel Information**

Specific Builder Required	No
Utilities Available to Lot	Electricity, Telephone, Cable, Natural gas, All underground
Water System	Municipal water available
Waste System	Municipal sewer available
Road	Concrete
Improvements	Curb/gutter, Sidewalk

### **Additional Information**

Zoning	Res
Short Sale	No
REO / Bank Owned	No