

\$550,000 - 4409 Keating Terrace, Madison

MLS® #1962277

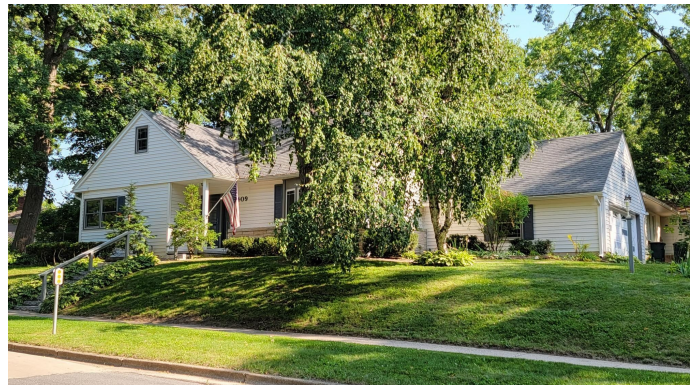
\$550,000

5 Bedroom, 2.00 Bathroom, 2,602 sqft

Single Family on 0 Acres

Midvale Heights, Madison, WI

Lovely Midcentury Modern w/in walking distance to schools, Library, restaurants & more! All windows (most Anderson) & exterior doors new since '15, new siding '22; roof '17; tankless WH '21; softener '14; and washer/dryer & freezer '21. Beautiful wood floors welcome you to a large living rm w/ wonderful windows, a wall of built-in bookshelves & a cozy, stone fireplace on a backdrop of real wood paneling: a cozy place to read in front of the fire! Updated kitchen w/ solid surface counters/sink, ample cabinet/counter space, eat-in area & walk-out to porch & generous brick patio '18 (also as extra parking). Two updated baths & 5 Bdrms plus an office/den offers flexibility for choice of primary, study, bedrooms & WFH. FF laundry w/ freezer & utility sink; LL fmly rm w/ firplc & new carpet.



Listing Courtesy of The Kruse Company,
Realtors

Built in 1954

Essential Information

| | |
|-----------------|-----------|
| Status | Sold |
| Detailed Status | Sold |
| Days on Market | 59 |
| MLS® # | 1962277 |
| Price | \$550,000 |
| Bedrooms | 5 |
| Bathrooms | 2.00 |

| | |
|----------------|---------------|
| Full Baths | 2 |
| Square Footage | 2,602 |
| Acres | 0.22 |
| Year Built | 1954 |
| Type | Single Family |
| Style | Cape Cod |
| Assessed Value | \$590,600 |
| Year Assesed | 2023 |
| Net Taxes | \$9,456 |
| Tax Year | 2022 |
| Exterior | Vinyl |

Community Information

| | |
|-------------|----------------------|
| Address | 4409 Keating Terrace |
| MLS® Area | MADISON - C W11 |
| Subdivision | Midvale Heights |
| City | Madison |
| County | Dane |
| State | WI |
| Zip Code | 53711 |

Interior

| | |
|-------------------|--|
| Interior Features | Wood or sim. wood floor, Walk-in closet(s), Cable available, At Least 1 tub, Internet - Cable, Washer, Dryer, Water softener inc, Jetted bathtub, Internet - Fiber |
| Cooling | Central air |
| Fireplace | Yes |
| Fireplaces | Wood burning, 2 fireplaces |

Exterior

| | |
|-------------------|-------------|
| Exterior Features | Patio, Deck |
|-------------------|-------------|

Amenities

| | |
|---------------|-----------------|
| Garages | Attached, 2 car |
| Is Waterfront | No |
| Golf Course | No |

School Information

| | |
|----------|---------|
| District | Madison |
|----------|---------|

| | |
|------------|-----------------|
| Elementary | Midvale/Lincoln |
| Middle | Hamilton |
| High | West |

Room Dimensions

| | |
|----------------|-------|
| Living Room | 15x21 |
| Kitchen | 9x17 |
| Dining Room | 10x11 |
| Family Room | 14x20 |
| Master Bedroom | 11x12 |
| Second Bedroom | 10x12 |
| Third Bedroom | 9x12 |
| Fourth Bedroom | 14x16 |

Additional Information

| | |
|-----------------------------------|--|
| Zoning | Res |
| Estimated Finished Above Grd SqFt | 2,252 |
| Fin Part/All Below Grd SqFt | 350 |
| Total Finished SqFt | 2,602 |
| Barrier Free | First floor bedroom, First floor full bath |
| Short Sale | No |
| REO / Bank Owned | No |