

\$450,000 - #6120 - 333 W Mifflin Street, Madison

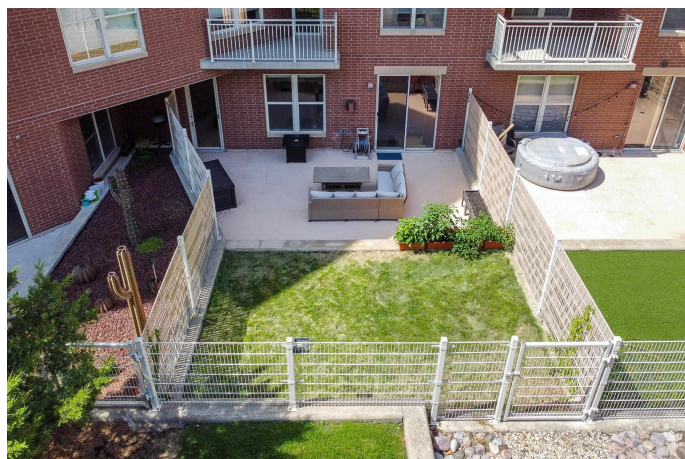
MLS® #1961802

\$450,000

2 Bedroom, 1.00 Bathroom, 1,352 sqft
Condo

N/A, Madison, WI

Showings start 8/20. Downtown living featuring a rare walkout to a private fenced patio + grass area with access to the common area park-like terrace. The open floor plan includes an updated kitchen with a breakfast bar and SS appliances. Enjoy the open living/dining with a gas fireplace when weather keeps you from the fabulous outdoor oasis. The primary bedroom has a large walk-in closet + access to the 600+ sq ft patio. A second bedroom for guests or office space. A 6'x8' storage unit + parking space are both on the 5th floor for convenience. The large exercise room is on the 2nd floor. All just steps from the Farmer's Market, Concerts on the Square, Taste of Madison, shopping and world class restaurants. This condo offers a unique Madison opportunity that can't be missed!



Listing Courtesy of Sprinkman Real Estate

Built in 2007

Essential Information

Status	Sold
Detailed Status	Sold
Days on Market	15
MLS® #	1961802
Price	\$450,000
Bedrooms	2
Bathrooms	1.00
Full Baths	1

Square Footage	1,352
Year Built	2007
Type	Condo
Style	Garden
Assessed Value	\$409,500
Year Assesed	2023
Net Taxes	\$6,925
Tax Year	2022
Exterior	Brick/Stone

Community Information

Address	#6120 - 333 W Mifflin Street
Unit:	6120
MLSÂ® Area	MADISON - C W01
Subdivision	N/A
Project Name	Metropolitan Place
City	Madison
County	Dane
State	WI
Zip Code	53703
Condo Fee	\$472
Condo Fees Include	Lawn maintenance, Hot Water, Trash removal, Snow removal, Common area maintenance, Common area insurance, Reserve fund
Pet Policy	Pets-Number Limit, Cats OK, Dogs OK
Condo Rental Allowed	N

Interior

Interior Features	Storage Locker Inc, At Least 1 tub, Internet-StarLink Install, Wood or sim. wood floors, Walk-in closet(s), Washer, Dryer, Water softener included, Cable/Satellite Available
Fireplace	Yes
Fireplaces	1 fireplace, Gas burning

Exterior

Exterior Features	Patio, Fenced Yard
-------------------	--------------------

Amenities

Amenities	Rooftop common area, Common Green Space, Close to busline
Parking	Attached, 1 space, Parking fee, Opener inc

Is Waterfront	No
Waterfront	Water ski lake
Golf Course	No

School Information

District	Madison
Elementary	Franklin/Randall
Middle	Hamilton
High	West

Room Dimensions

Living Room	20x12
Kitchen	10x8
Master Bedroom	14x12
Second Bedroom	12x12

Property Overview

Total Units	164
-------------	-----

Additional Information

Zoning	PD
Estimated Finished Above Grade SqFt	1,352
Total Finished SqFt	1,352
Units in Association	338
Barrier Free	Elevator
Terms	Pets-Number Limit, Cats OK, Dogs OK
Terms (Misc.)	Pets-Number Limit, Cats OK, Dogs OK
Short Sale	No
REO / Bank Owned	No