

# \$431,000 - #102 - 201 N Blair Street, Madison

MLS® #1961349

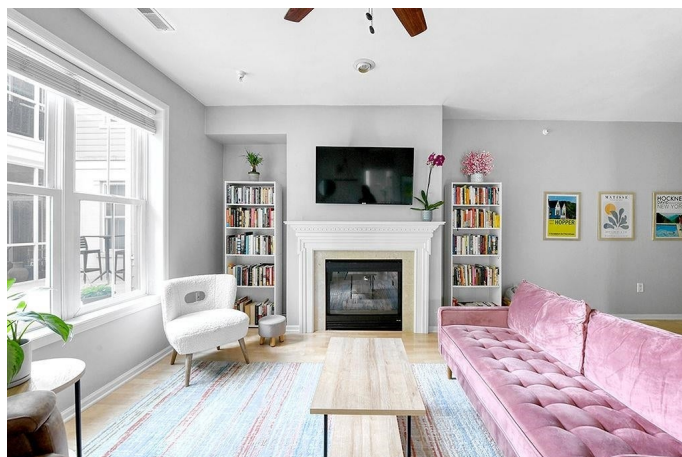
---

## \$431,000

2 Bedroom, 1.50 Bathroom, 1,106 sqft  
Condo

N/A, Madison, WI

Showings begin 8/9. Welcome home to this sunny, corner unit at Blair house. Beautifully updated kitchen opens into the main living room and dining area, ideal for entertaining. Tons of natural light, and a unique screened in porch with exit to patio make this unit ideal for plant and pet owners alike. For those chilly fall days- cozy up around the fireplace after a morning at the Farmer's Market. Huge primary with walk-in closet, duel sinks and plenty of room for storage. Walk and bike to the Capitol, East Wash corridor shops, restaurants, groceries, and venues. Take in the sunset from nearby James Madison Park. One underground parking stall and storage unit included with the sale. Recently updated washer and dryer is the cherry on top.



Listing Courtesy of Realty Executives Cooper Spransy

Built in 2002

## Essential Information

Status	Sold
Detailed Status	Sold
Days on Market	3
MLS® #	1961349
Price	\$431,000
Bedrooms	2
Bathrooms	1.50
Full Baths	1

Half Baths	1
Square Footage	1,106
Year Built	2002
Type	Condo
Style	Garden, End Unit
Assessed Value	\$370,000
Year Assesed	2023
Net Taxes	\$7,046
Tax Year	2022
Exterior	Brick/Stone, Fiber cement, Stone

### Community Information

Address	#102 - 201 N Blair Street
Unit:	102
MLS® Area	MADISON - C E01
Subdivision	N/A
Project Name	Blair House
City	Madison
County	Dane
State	WI
Zip Code	53703
Condo Fee	\$277
Condo Fees Include	Trash removal, Snow removal, Common area maintenance, Common area insurance, Lawn maintenance, High Speed Internet, Parking, Hot Water, Water/Sewer, Reserve fund
Pet Policy	Cats OK, Dogs OK
Condo Rental Allowed	N

### Interior

Interior Features	Walk-in closet(s), Washer, Dryer, Cable/Satellite Available, Storage Locker Inc, At Least 1 tub, Wood or sim. wood floors
Fireplace	Yes
Fireplaces	1 fireplace, Gas burning

### Exterior

Exterior Features	Private Entry, Patio
-------------------	----------------------

### Amenities

Amenities	Common Green Space, Elevator, Close to busline
-----------	--

Parking	Underground, 1 space, Opener inc, Attached, Heated
Is Waterfront	No
Golf Course	No

### School Information

District	Madison
Elementary	Lapham/Marquette
Middle	OKeeffe
High	East

### Room Dimensions

Living Room	21x15
Kitchen	12x10
Dining Room	13x8
Master Bedroom	15x13
Second Bedroom	10x9

### Property Overview

Total Units	24
-------------	----

### Additional Information

Zoning	PD
Estimated Finished Above Grade Sqft	1,106
Total Finished SqFt	1,106
Units in Association	24
Barrier Free	Open floor plan, Ramped or level entrance, Ramped or lvl from garage, First floor bedroom, First floor bathroom
Terms	Cats OK, Dogs OK
Terms (Misc.)	Cats OK, Dogs OK
Green Features	Energy Star Appliance(s)
Short Sale	No
REO / Bank Owned	No