

# \$333,250 - 3413 Hargrove Street, Madison

MLS® #1959839

---

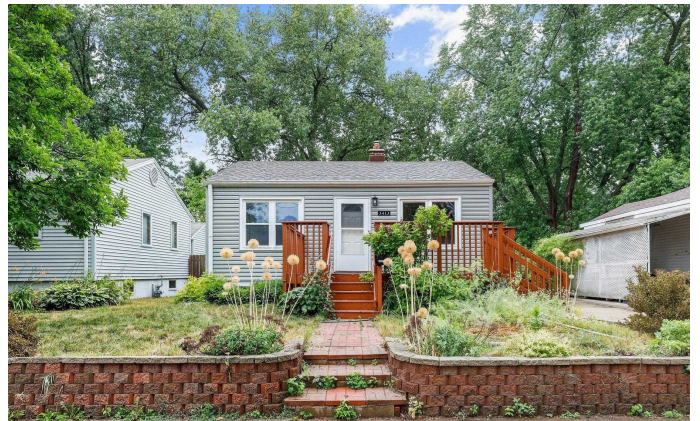
## \$333,250

3 Bedroom, 1.00 Bathroom, 1,001 sqft

Single Family on 0 Acres

Lansing Place, Madison, WI

Happy Summer! You'll love this home for your lifestyle. Jump on your bike or hit the kayak , you're in the heart of it. Move-in ready, packing a huge punch for it's size, all the big ticket items are taken care of. Updated kitchen, bath, original hardwoods, lighting ,hardware, egress window, garage, from exterior to the mechanicals, you're all set! New fence in 2020, prefect for the pups. Clean, insulated 1.5 car garage, workbench & storage. Park like setting in the backyard w/large mature trees, backing to Olbrich Gardens (view of the Thai Pavilion) & Starkweather Creek! Capitol City Bike Trail behind the home w/easy access to the new Garver bridge, plus a Kayak drop access, 3 houses down! Hop and skip to Lake Monona, Garver, Atwood, Parks, Shops, oh my!



Listing Courtesy of Lauer Realty Group, Inc.

Built in 1951

## Essential Information

Status	Sold
Detailed Status	Sold
Days on Market	4
MLS® #	1959839
Price	\$333,250
Bedrooms	3
Bathrooms	1.00
Full Baths	1

Square Footage	1,001
Acres	0.12
Year Built	1951
Type	Single Family
Style	Ranch
Assessed Value	\$306,700
Year Assesed	2023
Net Taxes	\$5,284
Tax Year	2022
Exterior	Vinyl

### **Community Information**

Address	3413 Hargrove Street
MLS® Area	MADISON - C E10
Subdivision	Lansing Place
City	Madison
County	Dane
State	WI
Zip Code	53714

### **Interior**

Interior Features	Washer, Dryer, Water softener inc, Cable available, At Least 1 tub
Cooling	Forced air, Central air

### **Exterior**

Exterior Features	Deck
-------------------	------

### **Amenities**

Garages	1 car, Detached
Is Waterfront	No
Golf Course	No

### **School Information**

District	Madison
Elementary	Schenk
Middle	Whitehorse
High	Lafollette

### **Room Dimensions**

Living Room	14x11
Kitchen	10x8
Master Bedroom	11x10
Second Bedroom	11x8
Third Bedroom	25x11

### **Additional Information**

Zoning	R3
Estimated Finished Above Grd	655 Sqft
Fin Part/All Below Grd SqFt	346
Total Finished SqFt	1,001
Short Sale	No
REO / Bank Owned	No