

\$500,000 - 6745 Frank Lloyd Wright Avenue, Middleton

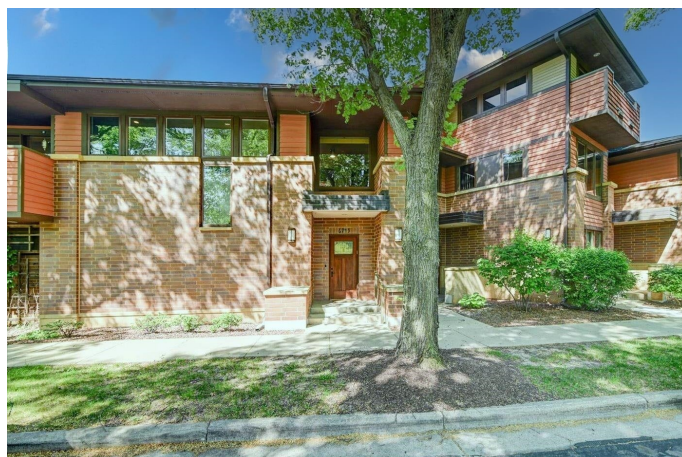
MLS® #1956844

\$500,000

2 Bedroom, 2.00 Bathroom, 1,800 sqft
Condo

N/A, Middleton, WI

Stunning, upscale 2 bed 2 bath condo in vibrant Middleton Hills. Walk to shops, restaurants, and nature conservancy, while enjoying a quiet, tree-filled neighborhood. This pristine retreat is bathed in natural light, with wood floors, stainless steel appliances, a three-sided gas fireplace, bathroom skylight, and a private balcony to enjoy the natural surroundings. With private entrance, huge closets and storage space, an attached 2-car garage, and high quality architectural features, this townhome-style condo more like a home. The primary bedroom has a large walk-in closet and full ensuite bath. Great for entertaining, with an open concept floor plan and dramatic entrance. Enjoy the best of Middleton with a carefree condo lifestyle! These rarely become available - don't miss out!



Listing Courtesy of Openhomes Inc.

Built in 2005

Essential Information

Status	Sold
Detailed Status	Sold
Days on Market	5
MLS® #	1956844
Price	\$500,000
Bedrooms	2
Bathrooms	2.00
Full Baths	2

Square Footage	1,800
Year Built	2005
Type	Condo
Style	Townhouse, Garden
Assessed Value	\$354,100
Year Assesed	2022
Net Taxes	\$5,945
Tax Year	2022
Exterior	Brick/Stone

Community Information

Address	6745 Frank Lloyd Wright Avenue
MLS® Area	MIDDLETON - C
Subdivision	N/A
Project Name	Middleton Hills
City	Middleton
County	Dane
State	WI
Zip Code	53562
Condo Fee	\$270
Condo Fees Include	Parking, Trash removal, Snow removal, Common area maintenance, Common area insurance, Reserve fund, Lawn maintenance
Pet Policy	Dogs OK, Cats OK
Condo Rental Allowed	N

Interior

Interior Features	Walk-in closet(s), Water softener included, Cable/Satellite Available, Storage Locker Inc, At Least 1 tub, Split bedroom, Internet - Cable, Internet - DSL, Wood or sim. wood floors, Skylight(s), Washer, Dryer, Security system, Intercom
Fireplace	Yes
Fireplaces	Gas burning

Exterior

Exterior Features	Private Entry, Deck/Balcony
-------------------	-----------------------------

Amenities

Amenities	Close to busline
Parking	2 car Garage, Attached, Opener inc

Is Waterfront	No
Golf Course	No

School Information

District	Middleton-Cross Plains
Elementary	Northside
Middle	Kromrey
High	Middleton

Room Dimensions

Living Room	17x12
Kitchen	12x10
Dining Room	11x10
Master Bedroom	19x10
Second Bedroom	13x10

Property Overview

Total Units	7
-------------	---

Additional Information

Zoning	res
Estimated Finished Above Grade Sqft	1,800
Total Finished SqFt	1,800
Units in Association	7
Barrier Free	Open floor plan, Ramped or level entrance, Ramped or lvl from garage, Stall shower, Level drive, Level
Terms	Dogs OK, Cats OK
Terms (Misc.)	Dogs OK, Cats OK
Green Features	Energy Star Appliance(s), Other Green Features
Short Sale	No
REO / Bank Owned	No