

# \$295,000 - #307 - 5196 Sassafras Drive, Fitchburg

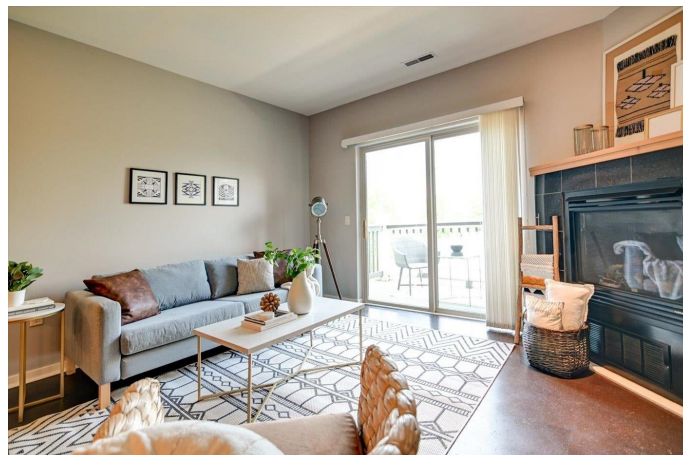
MLS® #1956231

## \$295,000

2 Bedroom, 2.00 Bathroom, 1,241 sqft  
Condo

N/A, Fitchburg, WI

Open House cancelled due to Accepting of Offer. Expansive and beautiful top floor corner unit in desirable location walkable to bike path, parks, yoga studio, restaurants, spa, & farmers market. Quick access to downtown, hospitals, university and Verona. Enjoy sitting by the fire in the winter or walking your pup on the many nearby trails in the summer. One of the larger units with upgraded split bedroom floor plan. Great light throughout. Each bedroom has a spacious walk-in closet & 2 full bathrooms with plenty of storage. Laundry room/pantry off of the entry. Cork flooring, upgraded cabinetry and beautiful granite counter tops. All mechanicals are routinely serviced. Condo comes with a storage unit and parking space. Assoc. includes fitness center and community room.



Listing Courtesy of Relish Realty

Built in 2006

## Essential Information

Status	Sold
Detailed Status	Sold
Days on Market	5
MLS® #	1956231
Price	\$295,000
Bedrooms	2
Bathrooms	2.00
Full Baths	2

Square Footage	1,241
Year Built	2006
Type	Condo
Style	Garden
Assessed Value	\$207,500
Year Assesed	2022
Net Taxes	\$3,812
Tax Year	2022
Exterior	Brick/Stone, Fiber cement, Stone

### Community Information

Address	#307 - 5196 Sassafras Drive
Unit:	307
MLS® Area	FITCHBURG - C
Subdivision	N/A
Project Name	Prairie Park @ Swan Creek
City	Fitchburg
County	Dane
State	WI
Zip Code	53711
Condo Fee	\$280
Condo Fees Include	Common area maintenance, Common area insurance, Reserve fund, Lawn maintenance, Snow removal, Recreation facility
Pet Policy	Pets-Number Limit
Condo Rental Allowed	N

### Interior

Interior Features	Walk-in closet(s), At Least 1 tub, Storage Locker Inc, Great room, Cathedral/vaulted ceiling, Washer, Dryer
Fireplace	Yes
Fireplaces	Gas burning

### Exterior

Exterior Features	Deck/Balcony, Patio
-------------------	---------------------

### Amenities

Amenities	Walking trail(s), Fire Sprinkler System, Common Green Space, Exercise room, Security system, Close to busline, Elevator
Parking	Opener inc, 1 car Garage, Underground, Heated

Is Waterfront	No
Golf Course	No

School Information

District	Madison
Elementary	West
Middle	Cherokee
High	West

Room Dimensions

Living Room	13x12
Kitchen	9x7
Dining Room	9x7
Master Bedroom	12x16
Second Bedroom	13x16

Property Overview

Total Units	32
-------------	----

Additional Information

Zoning	G1
Estimated Finished Above Grade Sqft	1,241
Total Finished SqFt	1,241
Units in Association	128
Barrier Free	Elevator, Open floor plan, Ramped or level entrance, Level drive, Level lot
Terms	Pets-Number Limit
Terms (Misc.)	Pets-Number Limit
Short Sale	No
REO / Bank Owned	No