

\$300,000 - #203 - 3020 Triverton Pike Dr, Fitchburg

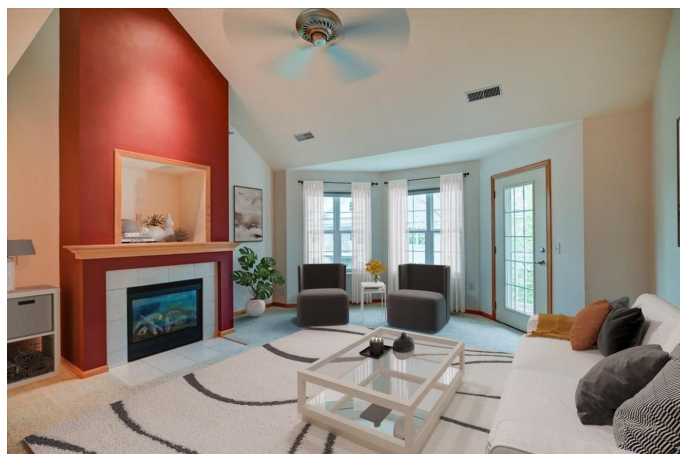
MLS® #1955912

\$300,000

2 Bedroom, 2.00 Bathroom, 1,637 sqft
Condo

N/A, Fitchburg, WI

So much offered in this quaint and well maintained 2 bedrm, 2 bath condo. This home is conveniently located to shopping, restaurants, coffee shops, healthcare, places of worship, recreation and fitness, just about everything you need/want- Including easy access to the Beltline. This bright condo features big windows and skylights that let the light in. Primary BR features a walk-in closet and en suite. The lrg loft is great for a 3rd sleeping area, office or 2nd living space. "Split bedroom" design allows for privacy within your condo. Enjoy your favorite beverage and let the birds serenade you on your private balcony. Two heated underground parking stalls and a storage unit are included. This condo has been professionally cleaned and is all ready for you to move in!



Listing Courtesy of Re/max Preferred

Built in 2004

Essential Information

Status	Sold
Detailed Status	Sold
Days on Market	5
MLS® #	1955912
Price	\$300,000
Bedrooms	2
Bathrooms	2.00
Full Baths	2

Square Footage	1,637
Year Built	2004
Type	Condo
Style	Townhouse
Assessed Value	\$255,500
Year Assesed	2022
Net Taxes	\$4,442
Tax Year	2022
Exterior	Vinyl, Brick/Stone, Stone

Community Information

Address	#203 - 3020 Triverton Pike Dr
Unit:	203
MLS® Area	FITCHBURG - C
Subdivision	N/A
Project Name	Highland Courtyard
City	Fitchburg
County	Dane
State	WI
Zip Code	53711
Condo Fee	\$408
Condo Fees Include	Hot Water, Water/Sewer, Trash removal, Snow removal, Common area maintenance, Common area insurance, Reserve fund
Pet Policy	Cats OK, Pets-Number Limit, Dog Size Limit, Dogs OK
Condo Rental Allowed	N

Interior

Interior Features	Walk-in closet(s), Cathedral/vaulted ceiling, Cable/Satellite Available, At Least 1 tub, Wood or sim. wood floors, Skylight(s)
Fireplace	Yes
Fireplaces	Gas burning, 1 fireplace

Exterior

Exterior Features	Deck/Balcony
-------------------	--------------

Amenities

Amenities	Common Green Space, Security system, Close to busline, Elevator
Parking	Underground, 2 spaces, Opener inc, Heated
Is Waterfront	No

Golf Course No

School Information

District Madison
Elementary Leopold
Middle Cherokee
High West

Room Dimensions

Living Room 16x16
Kitchen 12x11
Master Bedroom 14x12
Second Bedroom 12x11

Property Overview

Total Units 10

Additional Information

Zoning RES
Estimated Finished Above Grade Sqft 1,637
Total Finished SqFt 1,637
Units in Association 50
Barrier Free Open floor plan, Low pile or no carpeting
Terms Cats OK, Pets-Number Limit, Dog Size Limit, Dogs OK
Terms (Misc.) Cats OK, Pets-Number Limit, Dog Size Limit, Dogs OK
Short Sale No
REO / Bank Owned No