

# \$199,900 - 964 Blue Ice Pass, Verona

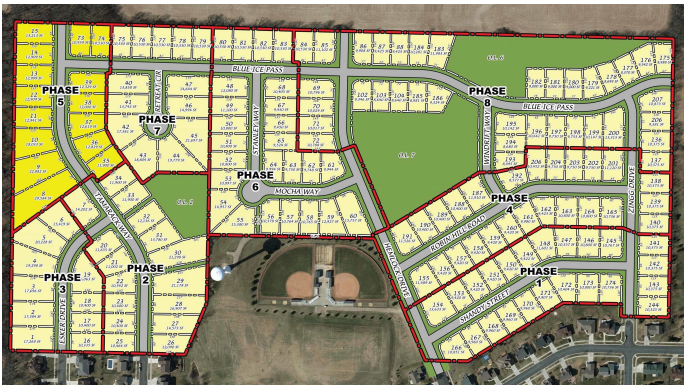
MLS® #1947620

**\$199,900**

Bedroom, Bathroom,  
Lots & Acreage on 0 Acres

Kettle Creek North, Verona, WI

Wooded lots in Kettle Creek North Phase 5 now available! Kettle Creek North includes plenty of green space, parks and bike paths. The newer subdivision is adjacent to Country View Elementary, walking distance to many nearby Verona Schools and just minutes to Hwy 18/151 and County M. Build your dream home in Kettle Creek North.



Listing Courtesy of Stark Company, Realtors

## Essential Information

Status	Sold
Detailed Status	Sold
Days on Market	131
MLS® #	1947620
Price	\$199,900
Acres	0.24
Price Per Acre	\$0
Type	Lots & Acreage
Assessed Value	\$29,900
Year Assesed	2021
Net Taxes	\$586
Tax Year	2021
Utilities	Natural gas, Electricity, Telephone, Cable, All underground
Zoning	Res
Type	City
Description	Rural - in subdivision
Features	Wooded

## Community Information

Address	964 Blue Ice Pass
MLS® Area	VERONA - C
Subdivision	Kettle Creek North
City	Verona
County	Dane
State	WI
Zip Code	53593

### **Amenities**

Is Waterfront	No
Golf Course	No

### **School Information**

District	Verona
Elementary	Country View
Middle	Badger Ridge
High	Verona

### **Parcel Information**

Specific Builder Required	No
Utilities Available to Lot	Natural gas, Electricity, Telephone, Cable, All underground
Water System	Municipal water available
Waste System	Municipal sewer available
Road	Concrete
Improvements	None, Silo/feed storage

### **Additional Information**

Zoning	Res
Short Sale	No
REO / Bank Owned	No