

# \$79,000 - Lot 12 Scott, Cambridge

MLS® #1946520

**\$79,000**

Bedroom, Bathroom,  
Lots & Acreage on 0 Acres

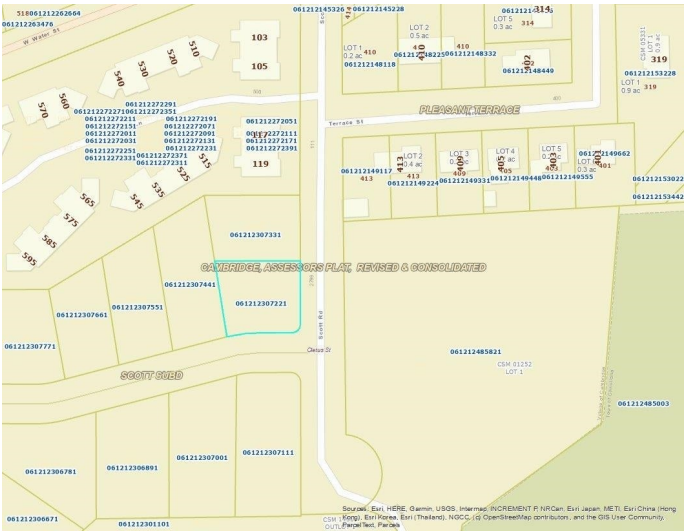
Scott Subdivision, Cambridge, WI

If youâ€™ve been thinking about building, be sure to check out the 19 lots in Cambridgeâ€™s newest Subdivision. Scott Subdivision is located on the South West side of Cambridge, a short walk to the elementary school, Camrock County Park, and also the shops and restaurants downtown. Lots sizes range from .3 acres to .81 acres. Recorded covenants ensure the size and quality of homes built and protect and maintain values along with the general character of the neighborhood. Cambridge has a great small-town feel, excellent schools, and is home to Lake Ripley.

Listing Courtesy of Exp Realty, Llc

## Essential Information

Status	Sold
Detailed Status	Sold
Days on Market	210
MLS® #	1946520
Price	\$79,000
Acres	0.31
Price Per Acre	\$0
Type	Lots & Acreage
Year Assesed	2022
Tax Year	2022
Utilities	Internet - Cable, Natural gas, Electricity, Telephone, Cable
Zoning	Res
Type	City, Other



Topography	Level, Sloping
------------	----------------

### **Community Information**

Address	Lot 12 Scott
MLS® Area	CAMBRIDGE - V
Subdivision	Scott Subdivision
City	Cambridge
County	Dane
State	WI
Zip Code	53523

### **Amenities**

Is Waterfront	No
Golf Course	No

### **School Information**

District	Cambridge
Elementary	Cambridge
Middle	Nikolay
High	Cambridge

### **Parcel Information**

Specific Builder Required	No
Utilities Available to Lot	Internet - Cable, Natural gas, Electricity, Telephone, Cable
Water System	Laterals to lot line
Waste System	Laterals to Lot Line
Road	Concrete
Improvements	Other

### **Additional Information**

Zoning	Res
Short Sale	No
REO / Bank Owned	No