

\$134,800 - L59 Forest Park Drive, Windsor

MLS® #1943584

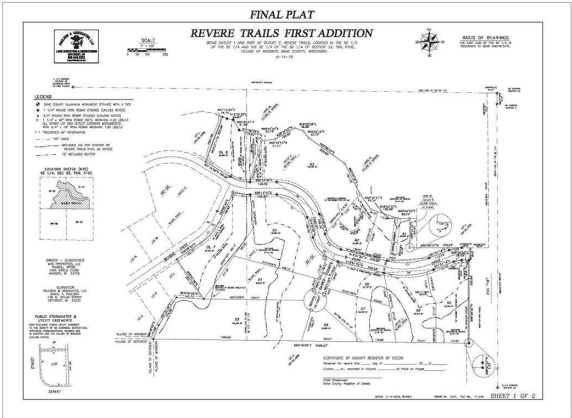
\$134,800

Bedroom, Bathroom,
Lots & Acreage on 2 Acres

Revere Trails, Windsor, WI

Larger Lots AT Great Prices! It's time for you to be a part of this spectacular neighborhood! Windsor / DeForest Schools, located close to: Woodmanâ€™s, Target, COSTCO, Copps, Walgreens, Cinema, Cabela's, Medical centers. Buyer to pay one-time Village of Windsor Park Fee of \$1,319.15 OR amount derived from COLA at first of the year plus HOA yearly dues of \$150.00 upon successful closing.

Listing Courtesy of Coldwell Banker Real Estate Group



Essential Information

Status	Sold
Detailed Status	Sold
Days on Market	229
MLS® #	1943584
Price	\$134,800
Acres	1.90
Price Per Acre	\$70,947
Type	Lots & Acreage
Assessed Value	\$133,500
Year Assesed	2021
Net Taxes	\$2,669
Tax Year	2021
Utilities	Natural gas, Electricity, All underground
Zoning	R-1
Type	Rural

Description	Rural - in subdivision
Features	Wetland
Topography	Level

Community Information

Address	L59 Forest Park Drive
MLS® Area	WINDSOR - T
Subdivision	Revere Trails
City	Windsor
County	Dane
State	WI
Zip Code	53532

Amenities

Is Waterfront	No
Golf Course	No

School Information

District	Deforest
Elementary	Windsor
Middle	Deforest
High	Deforest

Parcel Information

Specific Builder Required	Yes
Utilities Available to Lot	Natural gas, Electricity, All underground
Water System	Well required
Waste System	Non municipal/Private req
Road	Concrete
Improvements	Curb/gutter
Special Assessments	Buyer to assume

Additional Information

Zoning	R-1
Short Sale	No
REO / Bank Owned	No