

MLS® #1931240

Bedroom, Bathroom,  
Lots & Acreage on 1 Acres

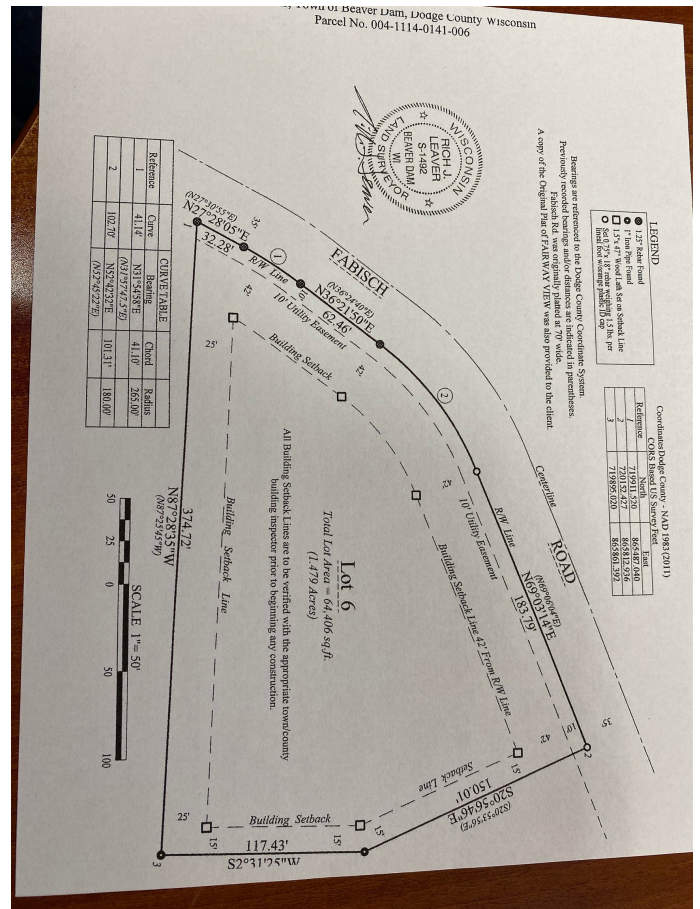
Fairway View, Beaver Dam, WI

Peaceful for this land to build a house. Perfect setting to enjoy the country but close to the city and to a golf course. Tucked back from the highway for privacy. Recently perk for at grade system and all lot lines and set backs are marked. You can easily plan for 5 bedroom house and have more room for a yard. Great opportunity to build the ultimate home.

Listing Courtesy of Sue Braemer Real Estate,  
Llc

## Essential Information

Status	Sold
Detailed Status	Sold
Days on Market	554
MLS® #	1931240
Price	\$37,500
Acres	1.48
Price Per Acre	\$25,338
Type	Lots & Acreage
Assessed Value	\$400
Year Assesed	2021
Net Taxes	\$7
Tax Year	2021
Utilities	Internet - Cable, Natural gas, Electricity, Telephone, All underground
Zoning	AG
Type	Rural
Description	Corner, Rural - in subdivision
Topography	Level



## Community Information

Address	Lot 6 Fabisch Road
MLS® Area	BEAVER DAM - T
Subdivision	Fairway View
City	Beaver Dam
County	Dodge
State	WI
Zip Code	53916

## Amenities

Is Waterfront	No
Golf Course	No

## School Information

District	Beaver Dam
Elementary	Prairie View
Middle	Beaver Dam
High	Beaver Dam

## Parcel Information

Specific Builder Required	No
Utilities Available to Lot	Internet - Cable, Natural gas, Electricity, Telephone, All underground
Water System	Well required
Waste System	Non municipal/Private req
Road	Concrete
Improvements	Driveway

## Additional Information

Zoning	AG
Short Sale	No
REO / Bank Owned	No