

\$276,000 - 6 Utah Ct, Madison

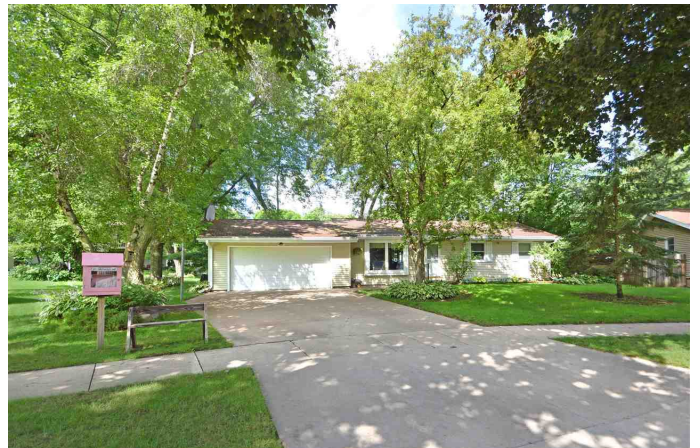
MLS® #1892074

\$276,000

3 Bedroom, 2.50 Bathroom, 1,700 sqft
Single Family on 0 Acres

Sinha Addition To Sherman Village, Madison, WI

Beautiful ranch home tucked away on a quiet cul-de-sac allowing you to enjoy all the peaceful & well thought out upgrades this home has to offer. A spacious living room greets you at the front door. Natural light draws you in towards the renovated kitchen and out to the 3-season room. The kitchen features all SS appliances, granite countertops and on-demand hot/cold water. The LL boasts an additional family room, as well as a workshop, huge laundry room, pantry & tons of storage. An optional 4th bedroom in the LL, just needs an egress window. Sizable lot featuring a brick patio, garden shed, raised garden beds & your very own little library. This is a very well cared for home & it shows. Come take a look today, this one will not last long. UHP Home Warranty Included.



Listing Courtesy of First Weber Inc

Built in 1976

Essential Information

| | |
|-----------------|-----------|
| Status | Sold |
| Detailed Status | Sold |
| Days on Market | 2 |
| MLS® # | 1892074 |
| Price | \$276,000 |
| Bedrooms | 3 |
| Bathrooms | 2.50 |
| Full Baths | 2 |

| | |
|----------------|---------------|
| Half Baths | 1 |
| Square Footage | 1,700 |
| Acres | 0.26 |
| Year Built | 1976 |
| Type | Single Family |
| Style | Ranch |
| Assessed Value | \$230,500 |
| Year Assesed | 2020 |
| Net Taxes | \$4,701 |
| Tax Year | 2019 |
| Exterior | Vinyl |

Community Information

| | |
|-------------|-----------------------------------|
| Address | 6 Utah Ct |
| MLS® Area | MADISON - C E03 |
| Subdivision | Sinha Addition To Sherman Village |
| City | Madison |
| County | Dane |
| State | WI |
| Zip Code | 53704 |

Interior

| | |
|-------------------|---|
| Interior Features | Wood or sim. wood floor, Washer, Dryer, Water softener RENTED, Cable available, High Speed Internet, At Least 1 tub |
| Cooling | Forced air, Central air |

Exterior

| | |
|-------------------|-------------------------|
| Exterior Features | Patio, Storage building |
|-------------------|-------------------------|

Amenities

| | |
|---------------|-----------------|
| Garages | 2 car, Attached |
| Is Waterfront | No |
| Golf Course | No |

School Information

| | |
|------------|------------|
| District | Madison |
| Elementary | Gompers |
| Middle | Black Hawk |
| High | East |

Room Dimensions

| | |
|----------------|-------|
| Living Room | 18x13 |
| Kitchen | 13x9 |
| Family Room | 27x12 |
| Master Bedroom | 12x12 |
| Second Bedroom | 11x11 |
| Third Bedroom | 10x10 |

Additional Information

| | |
|--------------------------------|----------------------------|
| Zoning | R1 |
| Estimated Finished Above Grade | 1,140 Sqft |
| Fin Part/All Below Grd SqFt | 560 |
| Total Finished SqFt | 1,700 |
| Barrier Free | Open floor plan, Level lot |
| Short Sale | No |
| REO / Bank Owned | No |