

\$1,550,000 - 1175 Farwell Dr, Maple Bluff

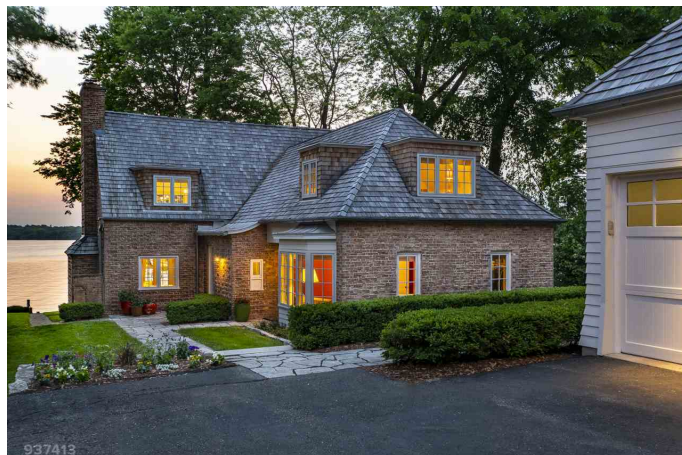
MLS® #1859428

\$1,550,000

4 Bedroom, 3.50 Bathroom, 3,125 sqft
Single Family on 1 Acres

Maple Bluff, Maple Bluff, WI

No Showings Until 6/8. Stunning Maple Bluff home with prime Lake Mendota frontage sits directly across from the golf course. Every day is a great day in this sun filled 4bdrm 3.5 bath home. 3 car garage w /room above to expand add'l strg,studio,bonus rm-endless opportunies. Master ste w/ expansive views boasts of custom cabinetry, lavish shower and walk in closet. Updated modern kitchen w/ high end appliances opens to gracious dining room full of windows. Relax and unwind in the living rm next to the grand fireplace or just walk out to the meticulously landscaped yard and enjoy spectacular sunsets on the patio. Perfect place to call home.



Listing Courtesy of Sprinkman Real Estate

Built in 1940

Essential Information

Status	Sold
Detailed Status	Sold
Days on Market	24
MLS® #	1859428
Price	\$1,550,000
Bedrooms	4
Bathrooms	3.50
Full Baths	3
Half Baths	1
Square Footage	3,125
Acres	0.59

Year Built	1940
Type	Single Family
Style	Cape Cod, Tudor, Colonial
Assessed Value	\$1,031,500
Year Assesed	2019
Net Taxes	\$22,346
Tax Year	2018
Exterior	Brick/Stone, Stone

Community Information

Address	1175 Farwell Dr
MLS® Area	MAPLE BLUFF - V
Subdivision	Maple Bluff
City	Maple Bluff
County	Dane
State	WI
Zip Code	53704

Interior

Interior Features	Wood or sim. wood floor, Washer, Dryer, Water softener inc, Cable available, High Speed Internet, At Least 1 tub, Walk-in closet(s), Security system
Cooling	Forced air, Central air
Fireplace	Yes
Fireplaces	Wood burning

Exterior

Exterior Features	Patio
-------------------	-------

Amenities

Garages	Detached, Opener, 3 car
Is Waterfront	Yes
Waterfront	Has actual water frontage, On a lake, Dock/Pier
Lake/River	Mendota
Golf Course	No

School Information

District	Madison
Elementary	Lakeview

Middle	Sherman
High	East

Room Dimensions

Living Room	18x18
Kitchen	16x9
Dining Room	12x16
Master Bedroom	16x18
Second Bedroom	12x14
Third Bedroom	11x13
Fourth Bedroom	13x16

Additional Information

Zoning	Res
Estimated Finished Above Grade Sqft	2,485
Fin Part/All Below Grd SqFt	625
Total Finished SqFt	3,125
Short Sale	No
REO / Bank Owned	No